



Smart Solar Street Light

www.21st-Century-Group.com





Product Advantage

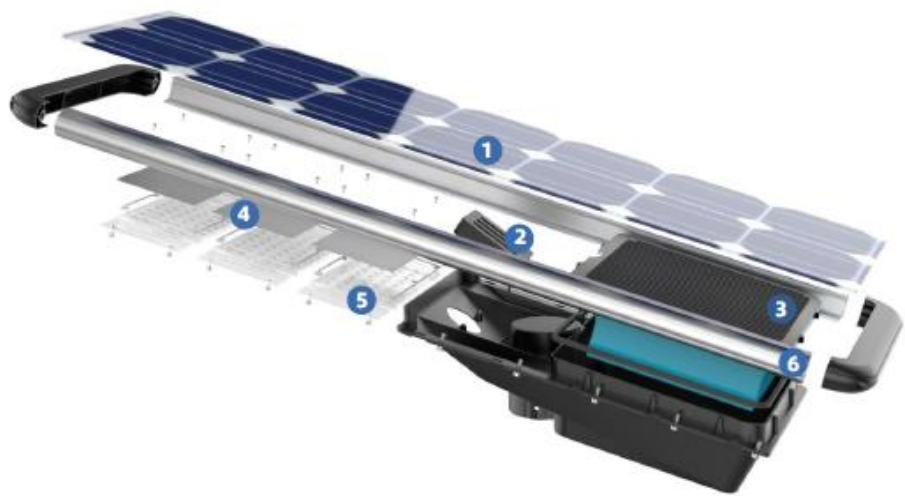
MAINSTREAM INTEGRATED STRUCTURE DESIGN

Saving transportation cost.
Easy to install and convenient
for maintenance.

DIE-CAST ALUMINUM BRACKET

High mechanical strength,
anti-wind resistance of Level-16.





1 Mono Solar Panel

2 Control Module

3 LifePo4 Battery

4 LED Plate

5 Optical Lens

6 Die Cast Aluminum Bracket



HIGH POWER

Enlarged capacity LED module design, equipped with high-brightness Bridgelux LED chips, improving the brightness by 30%.

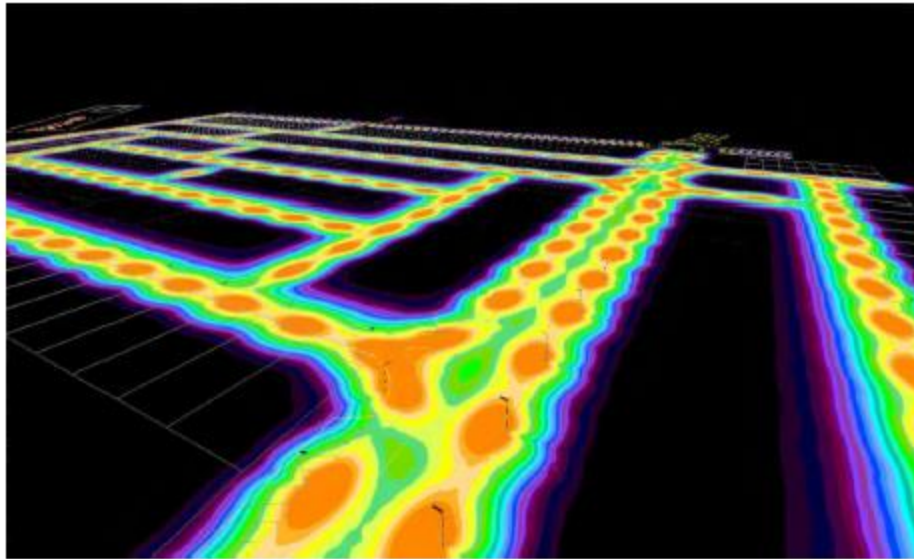
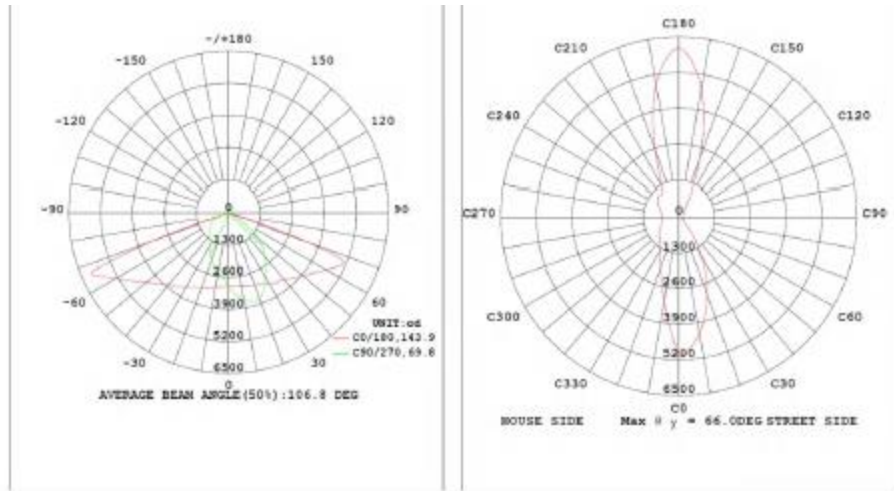
Enlarge
LED Module

3030 LED chip

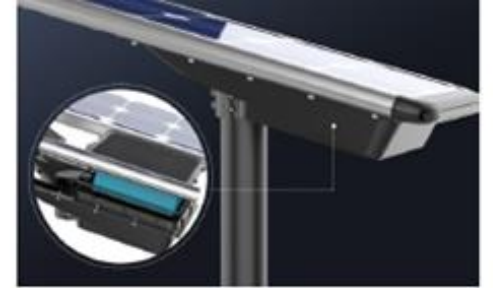
REMOTE CONTROL

Three lighting modes for choice, flexible to switch via remote control.

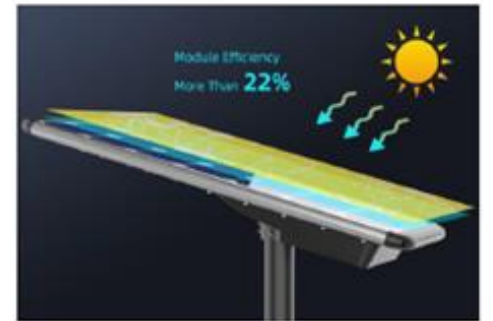
Product Advantage



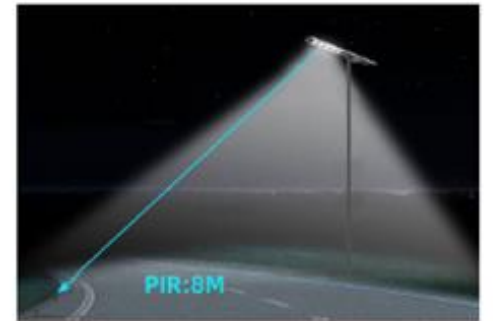
LifePo4 Battery
Brand new and big capacity



Mono Solar Panel
22% photoelectric conversion efficiency



PIR Sensor
More than 8m sensing distance





HD Wifi Camera(optional)



WIFI Features

High resolution with 90 degree view angle ; solar lamps and camera are integrated, no additional installation;
Easy operation with WIFI connection



		Features & Specifications	Unit Price (USD/pc)		
	Features: Elegant All-in-One Design, Aluminum alloy case; Photozell Control + Microwave motion sensor Control + Remote Control; 140° wide lighting angle, enlarged LED module; Support 4-5 nights lighting after full charging; Easy to install and Auto on/off/sensor		Sample: <10pcs	Order qty: 10-100 pcs	Order qty: >100 pcs
	LED Light Source	40W, 96pcs Bridgelux high efficiency LEDs, efficiency 210LM/W, Ra>80, 3000-6500K optional	Lighting Mode: Time Control + Motion Sensor (Keep bright lighting for 30 secs when people or vehicles move nearby the lamp) + Remote Control		
	Battery	12.8V/28AH, LiFePO4 lithium, >2000 cycles at 80% DOD			
	Solar Panel	18V 65W, high-efficiency monocrystalline	Packing details: Lamp packaging:915*175*445mm G.W/Pcs:		
	Install height	Suggested to be 4~7 meters			
	Guard Level	IP 65			
	Solar charging time	8~9 hours by bright sunlight			
	Lighting time	4-5 nights			
	Housing Material	Aluminium alloy + PMMA			
	Size	848*385*139mm			
	Working temperature	-25℃ to 65℃			
	Warranty	5 years			
Wifi Camera (80-120W Optional)		Resolution: 1080P/720P/640P Vedio Format: AVI Frame Number: 25 Visual Angle: 90 degrees Motion Detection Distance: Straight line 6 meters Continuous Video Duration: At least 5 hours Power Consumption: 240MA/3.7V Max capacity of Memory Card: 32G	Unit Price (USD/pc)		